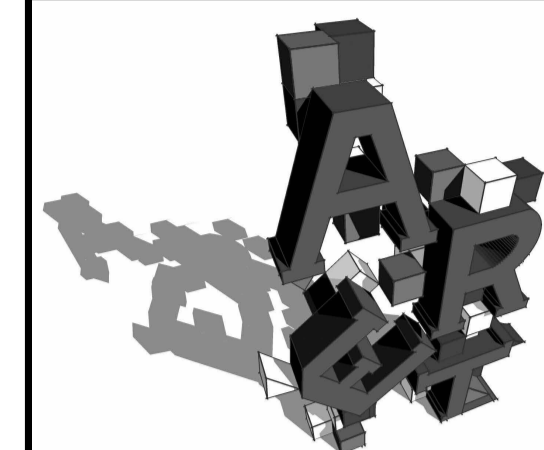




THOMPSON RIVERS UNIVERSITY

900 McGill Road
Box 3010
Kamloops, BC
V2C 5N3
Tel: 250-828-5000
Fax: 250-371-8133



ARCHITECTURAL AND ENGINEERING TECHNOLOGY

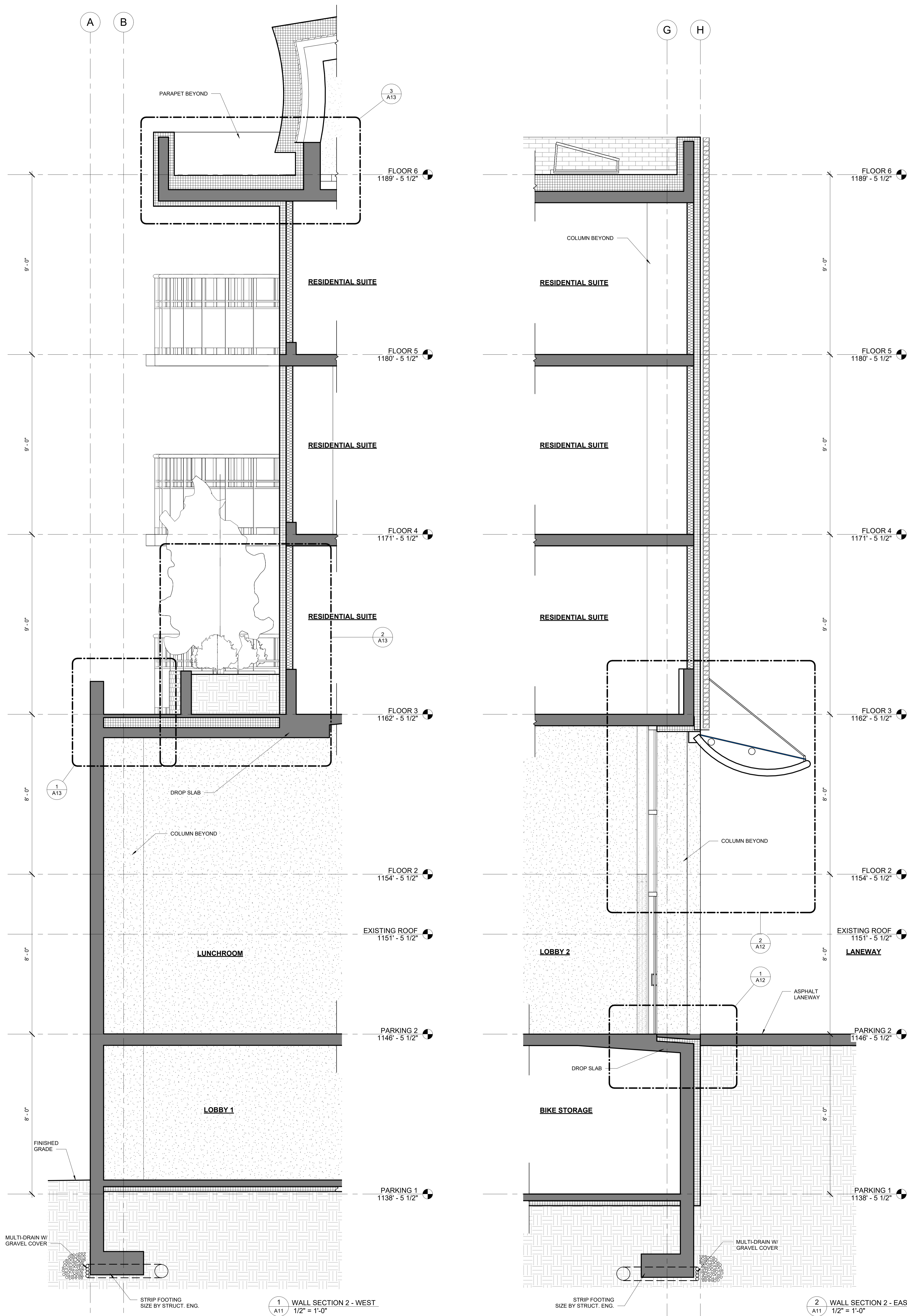
FLOOR AND ROOF TYPES SCHEDULE

- A - PARKING SLAB ON GRADE**
 - 4" CONC. SLAB
 - 6 MIL. POLY DAMPROOFING
 - 5" GRANULAR FILL
- B - SLAB ON GRADE**
 - 4" CONC. SLAB
 - 4" RIGID INSULATION
 - 6 MIL. POLY DAMPROOFING
 - 5" GRANULAR FILL
- C - SUSPENDED PARKING SLAB**
 - 6" CONC. SLAB
 - W/ TRAFFIC COATING
 - AND COATED REBAR
- D - RESIDENTIAL SUSPENDED SLAB 1 HOUR F.R.R.**
 - ENGINEERED HARDWOOD
 - ACOUSTIC UNDERLAYMENT
 - 6" CONC. SLAB
 - SPRAY TEXTURED CEILING
- E - STANDARD FLAT ROOF 1 HOUR F.R.R.**
 - ROOF MEMBRANE
 - FIBERGLASS ROOF PANEL
 - 10" RIGID INSULATION - SLOPED TO DRAINS
 - POLY VAPOUR BARRIER
 - 6" CONCRETE SLAB
 - SPRAY TEXTURED CEILING
- F - SLOPING ROOF**
 - STANDING SEAM METAL ROOF
 - ICE AND WATER SHIELD
 - FIBERGLASS FACED GWB ROOF PANEL
 - 10" RIGID INSULATION
 - POLY VAPOUR BARRIER
 - STEEL ROOF DECKING
 - OPEN WEBBED STEEL JOISTS
- G - ROOF TERRACE**
 - PORCELIN DECKING TILES
 - ADJUSTABLE PEDASTALS
 - 10" RIGID INSULATION
 - 1/2" FIBRE CEMENT PANEL
 - ROOF MEMBRANE
 - 6" CONC. SLAB
 - SPRAY TEXTURED CEILING
- H - FLAT ROOF (TOP EXPOSURE)**
 - TORCH ON ROOFING MEMBRANE
 - FIBER FACED GYPSUM
 - 10" RIGID INSULATION
 - ROOF MEMBRANE
 - 6" CONC. SLAB
 - 3/8" STEEL STUDS
 - 5/8" GYPSUM WALLBOARD
- I - FLAT ROOF (DOUBLE EXPOSURE)**
 - TORCH ON ROOFING MEMBRANE
 - 10" RIGID INSULATION
 - ROOF MEMBRANE
 - 6" CONC. SLAB
 - 3" RIGID INSULATION
 - 4" AIRSPACE
 - 1/2" LINEAR METAL SUSPENDED SOFFIT
- J - TERRACE PLANTER**
 - 2" ORGANIC MULCH
 - 2 - 0" ENGINEERED SOIL
 - AIRATION LAYER
 - FILTER FABRIC
 - ROOT BARRIER
 - 10" RIGID INSULATION
 - 1/2" FIBRE CEMENT PANEL
 - ROOF MEMBRANE
 - 6" CONC. SLAB
 - SPRAY TEXTURED CEILING

WALL TYPE SCHEDULE

NOTE: ALL WALLS TO BE TYPE A U.N.O

- A** TYPE A: 5" PARTITION WALL
 - 1/2" GWB
 - 3 5/8" STEEL STUDS
 - 1/2" GWB
- B** TYPE B: 6" HALLWAY WALL
 - 5/8" TYPE X GWB
 - 3 5/8" STEEL STUDS
 - WBATT INSULATION
 - 5/8" TYPE X GWB
 - 60 MINUTE F.R.R.
- C** TYPE C: 12" PARTY WALL
 - 5/8" TYPE X GWB
 - 3 5/8" STAGGERED STEEL STUDS
 - WBATT INSULATION
 - 5/8" TYPE X GWB
 - 60 MINUTE F.R.R.
- D** TYPE D: 8" EXTERIOR WALL
 - 5/8" TYPE X GWB
 - 3 5/8" STEEL STUDS
 - WBATT INSULATION
 - 1/2" FIBERGLASS FACED GWB
 - AIR VAPOUR BARRIER
 - 4" SEMI-RIGID INSULATION
 - W/ CLIP SYSTEM
 - 1/2" AIR SPACE
 - FIBRE CEMENT PANELS
- E** TYPE E: 8" EXTERIOR WALL
 - 5/8" TYPE X GWB
 - 3 5/8" STEEL STUDS
 - WBATT INSULATION
 - 1/2" FIBERGLASS FACED GWB
 - AIR VAPOUR BARRIER
 - 4" SEMI-RIGID INSULATION
 - W/ CLIP SYSTEM
 - 1/2" AIR SPACE
 - GREEN TILE
- F** TYPE F: 8" EXTERIOR WALL
 - 5/8" TYPE X GWB
 - 3 5/8" STEEL STUDS
 - WBATT INSULATION
 - 1/2" FIBERGLASS FACED GWB
 - AIR VAPOUR BARRIER
 - 4" SEMI-RIGID INSULATION
 - W/ CLIP SYSTEM
 - 1/2" AIR SPACE
 - STAINLESS STEEL PANELS
- G** TYPE G: 8" EXTERIOR WALL
 - 5/8" GWB
 - 3 5/8" STEEL STUDS
 - WBATT INSULATION
 - 1/2" FIBERGLASS FACED GWB
 - AIR VAPOUR BARRIER
 - 4" SEMI-RIGID INSULATION
 - W/ CLIP SYSTEM
 - 2" AIR SPACE
 - 4" BRICK
- H** TYPE H: 8" CONCRETE WALL
 - 8" CONCRETE
- I** TYPE I: 8" CONCRETE MASONRY
 - 8" CONCRETE MASONRY
- J** TYPE J: 12" CONCRETE WALL WITH EXTERIOR INSULATION
 - 8" CONCRETE
 - 4" RIGID INSULATION



1 WALL SECTION 2 - WEST
1/2" = 1'-0"

2 WALL SECTION 2 - EAST
1/2" = 1'-0"

No.	Revision	Date	By

PROJECT NAME
448 TRANQUILLE ROAD

DRAWING TITLE
WALL SECTIONS

SCALE
As indicated

DRAWN BY
T STEWART

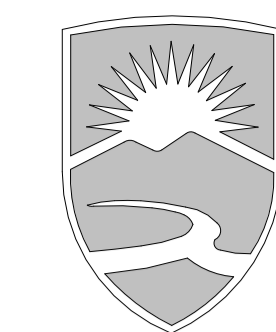
CHECKED
D PARKES

DATE
04/07/22

JOB NO.
3310 - 2022

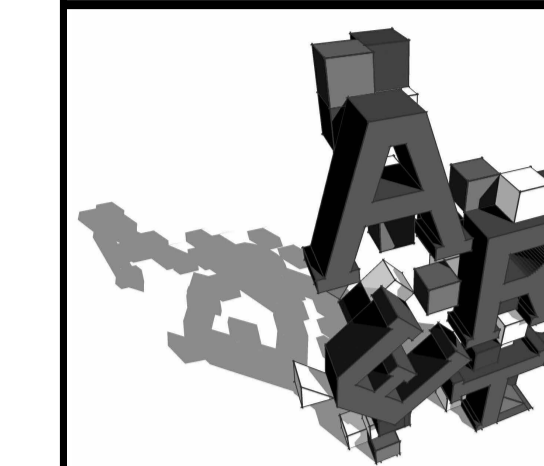
DRAWING NO.

A11

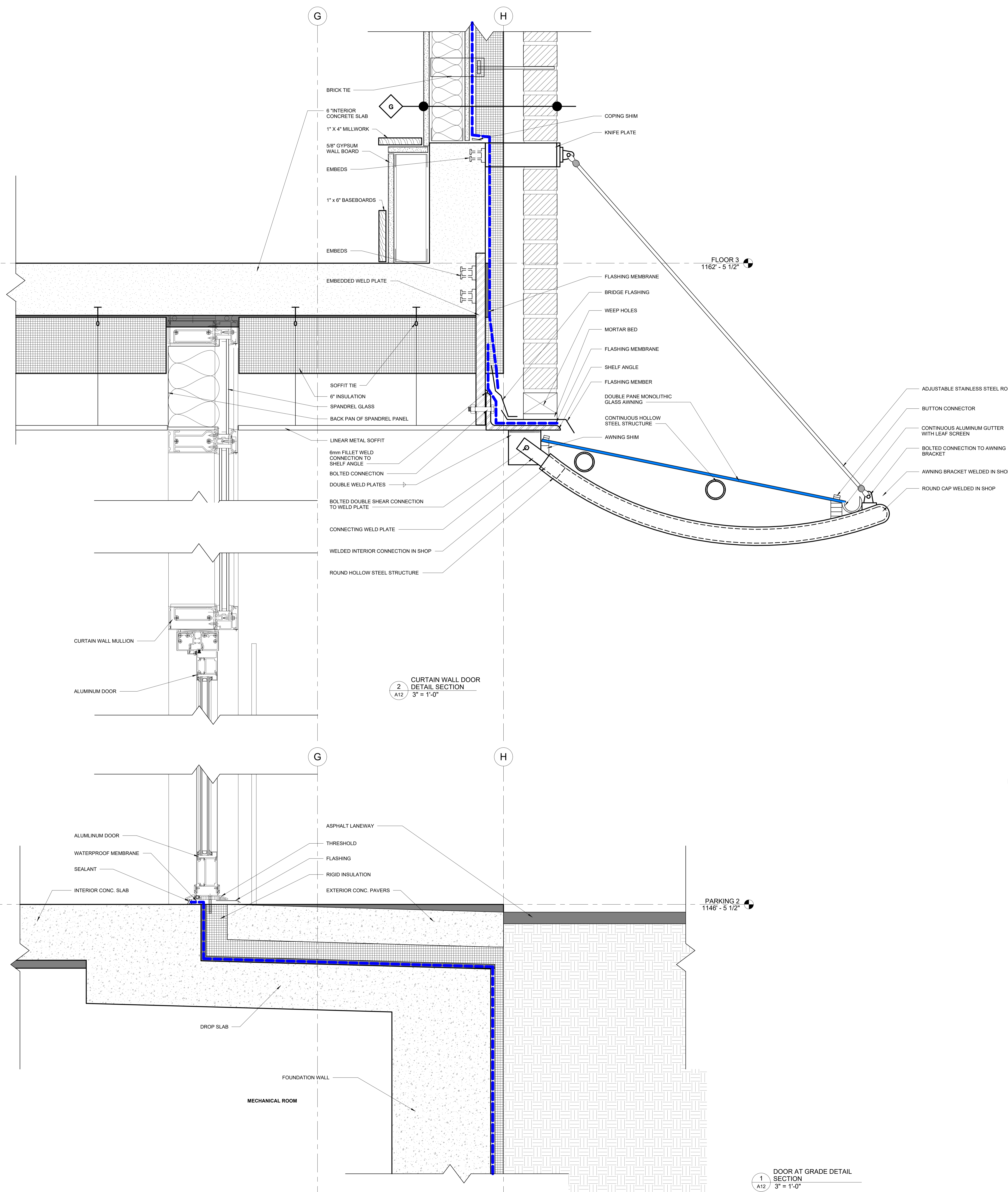


THOMPSON RIVERS UNIVERSITY

900 McGill Road
Box 3010
Kamloops, BC
V2C 5N3
Tel: 250-828-5000
Fax: 250-371-6133



ARCHITECTURAL AND ENGINEERING TECHNOLOGY



FLOOR AND ROOF TYPES SCHEDULE

- A - PARKING SLAB ON GRADE**
- 4" CONC. SLAB
- 6 MIL. POLY DAMPROOFING
- 5" GRANULAR FILL
- B - SLAB ON GRADE**
- 4" CONC. SLAB
- 4" RIGID INSULATION
- 6 MIL. POLY DAMPROOFING
- 5" GRANULAR FILL
- C - SUSPENDED PARKING SLAB**
- 6" CONC. SLAB
- W/ TRAFFIC COATING AND COATED REBAR
- D - RESIDENTIAL SUSPENDED SLAB 1 HOUR F.R.R.**
- ENGINEERED HARDWOOD
- ACOUSTIC UNDERLAYMENT
- 6" CONC. SLAB
- SPRAY TEXTURED CEILING
- E - STANDARD FLAT ROOF 1 HOUR F.R.R.**
- ROOF MEMBRANE
- FIBERGLASS FACED GWB ROOF PANEL
- 10" RIGID INSULATION - SLOPED TO DRAINS
- POLY VAPOUR BARRIER
- 6" CONCRETE SLAB
- SPRAY TEXTURED CEILING
- F - SLOPING ROOF**
- STANDING SEAM METAL ROOF
- ICE AND WATER SHIELD
- FIBERGLASS FACED GWB ROOF PANEL
- 10" RIGID INSULATION
- POLY VAPOUR BARRIER
- STEEL ROOF DECKING
- OPEN WEBBED STEEL JOISTS
- G - ROOF TERRACE**
- PORCELIN DECKING TILES
- ADJUSTABLE PEDISTALS
- 10" RIGID INSULATION
- 12" FIBRE CEMENT PANEL
- ROOF MEMBRANE
- 6" CONC. SLAB
- SPRAY TEXTURED CEILING
- H - FLAT ROOF (TOP EXPOSURE)**
- TORCH ON ROOFING MEMBRANE
- FIBER FACED GYPSUM
- 10" RIGID INSULATION
- ROOF MEMBRANE
- 6" CONC. SLAB
- 3 5/8" STEEL STUDS
- 5/8" GYPSUM WALLBOARD
- I - FLAT ROOF (DOUBLE EXPOSURE)**
- TORCH ON ROOFING MEMBRANE
- 10" RIGID INSULATION
- ROOF MEMBRANE
- 6" CONC. SLAB
- 3" RIGID INSULATION
- 4" AIRSPACE
- 1/2" LINEAR METAL SUSPENDED SOFFIT
- J - TERRACE PLANTER**
- 2" ORGANIC MULCH
- 2 - 0" ENGINEERED SOIL
- AERATION LAYER
- FILTER FABRIC
- ROOT BARRIER
- 10" RIGID INSULATION
- 12" FIBRE CEMENT PANEL
- ROOF MEMBRANE
- 6" CONC. SLAB
- SPRAY TEXTURED CEILING

WALL TYPE SCHEDULE

NOTE: ALL WALLS TO BE TYPE A U.N.O

- A** TYPE A: 5" PARTITION WALL
- 1/2" GWB
- 3 5/8" STEEL STUDS
- 1/2" GWB
- B** TYPE B: 6" HALLWAY WALL
- 5/8" TYPE-X GWB
- 3 5/8" STEEL STUDS
- WBATT INSULATION
- 5/8" TYPE-X GWB
- 60 MINUTE F.R.R.
- C** TYPE C: 12" PARTY WALL
- 5/8" TYPE-X GWB
- 3 5/8" STEEL STUDS
- WBATT INSULATION
- 5/8" TYPE-X GWB
- 60 MINUTE F.R.R.
- D** TYPE D: 8" EXTERIOR WALL
- 5/8" TYPE-X GWB
- 3 5/8" STEEL STUDS
- WBATT INSULATION
- 10" FIBERGLASS FACED GWB
- AIR VAPOUR BARRIER
- 4" SEMI-RIGID INSULATION
- W/ CLIP SYSTEM
- 12" AIR SPACE
- FIBRE CEMENT PANELS
- E** TYPE E: 8" EXTERIOR WALL
- 5/8" TYPE-X GWB
- 3 5/8" STEEL STUDS
- WBATT INSULATION
- 10" FIBERGLASS FACED GWB
- AIR VAPOUR BARRIER
- 4" SEMI-RIGID INSULATION
- W/ CLIP SYSTEM
- 12" AIR SPACE
- GREEN TILE
- F** TYPE F: 8" EXTERIOR WALL
- 5/8" TYPE-X GWB
- 3 5/8" STEEL STUDS
- WBATT INSULATION
- 10" FIBERGLASS FACED GWB
- AIR VAPOUR BARRIER
- 4" SEMI-RIGID INSULATION
- W/ CLIP SYSTEM
- 12" AIR SPACE
- STAINLESS STEEL PANELS
- G** TYPE G: 8" EXTERIOR WALL
- 5/8" GWB
- 3 5/8" STEEL STUDS
- WBATT INSULATION
- 10" FIBERGLASS FACED GWB
- AIR VAPOUR BARRIER
- 4" SEMI-RIGID INSULATION
- W/ CLIP SYSTEM
- 2" AIR SPACE
- 4" BRICK
- H** TYPE H: 8" CONCRETE WALL
- 8" CONCRETE
- I** TYPE I: 8" CONCRETE MASONRY
- 8" CONCRETE MASONRY
- J** TYPE J: 12" CONCRETE WALL WITH EXTERIOR INSULATION
- 8" CONCRETE
- 4" RIGID INSULATION

2 CURTAIN WALL DOOR DETAIL SECTION
A12 3" = 1'-0"

1 DOOR AT GRADE DETAIL SECTION
A12 3" = 1'-0"

No.	Revision	Date	By

PROJECT NAME
448 TRANQUILLE ROAD

DRAWING TITLE
DETAIL SECTIONS

SCALE
As indicated

DRAWN BY
T. STEWART

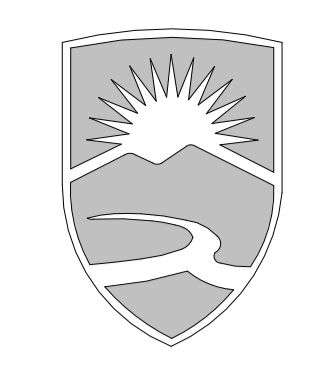
CHECKED
D. PARKES

DATE
04/1/22

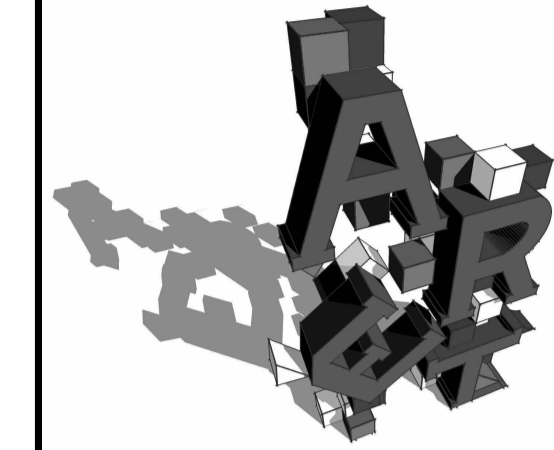
JOB NO.
3310 - 2022

DRAWING NO.
A12

4/28/2022 6:10:19 PM



THOMPSON RIVERS UNIVERSITY
 900 McGill Road
 Box 3010
 Kamloops, BC
 V2C 5N3
 Tel: 250-828-5000
 Fax: 250-371-8133



ARCHITECTURAL AND ENGINEERING TECHNOLOGY

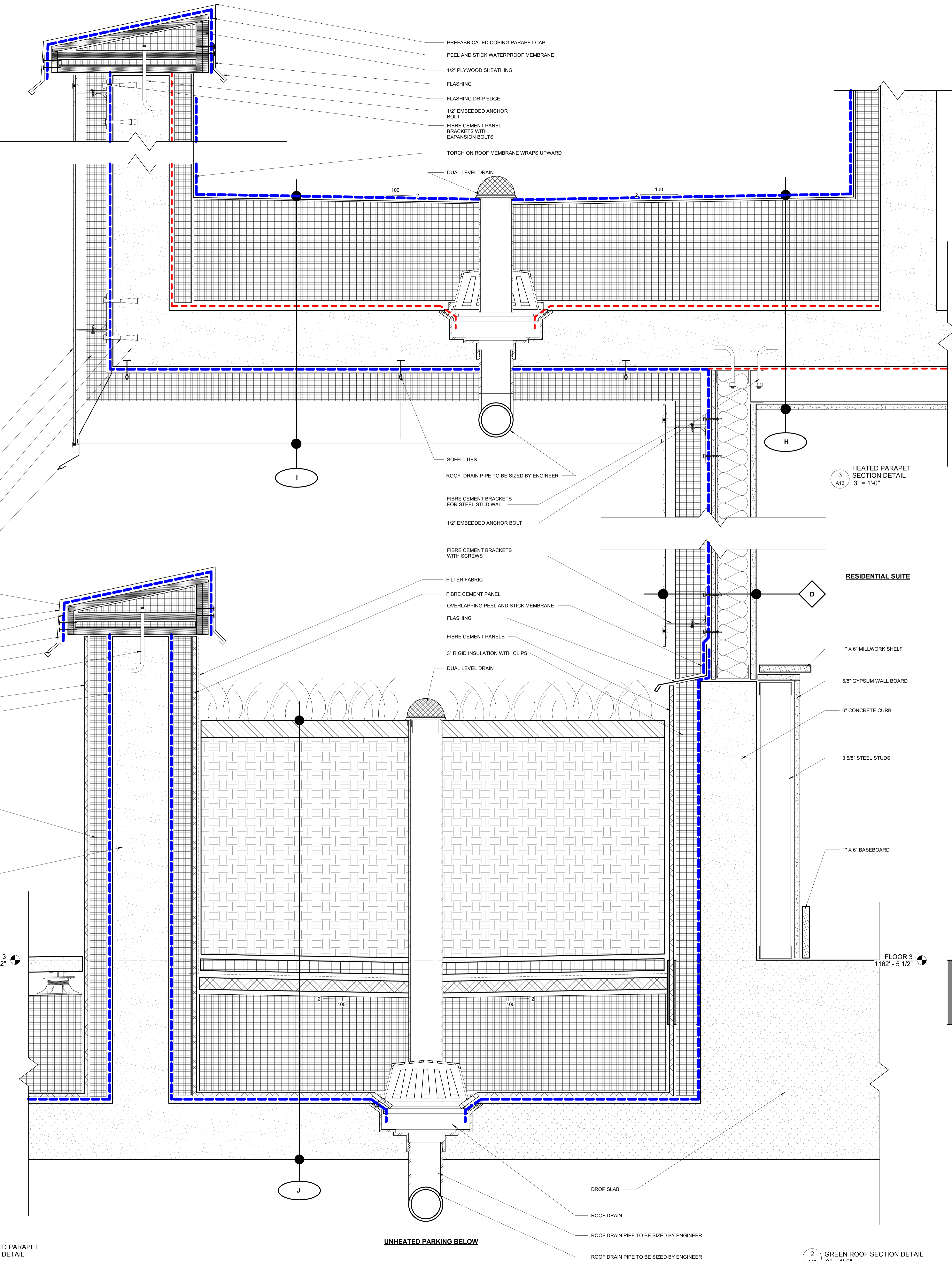
FLOOR AND ROOF TYPES SCHEDULE

- A - PARKING SLAB ON GRADE**
 -4" CONC. SLAB
 -4 MIL. TOLU DAMPROOFING
 -5" GRANULAR FILL
- B - SLAB ON GRADE**
 -4" CONC. SLAB
 -4" RIGID INSULATION
 -4 MIL. TOLU DAMPROOFING
 -5" GRANULAR FILL
- C - SUSPENDED PARKING SLAB**
 -4" CONC. SLAB
 -W/ TRAFFIC COATING
 -AND COATED REBAR
- D - RESIDENTIAL SUSPENDED SLAB 1 HOUR F.R.R.**
 -ENGINEERED HARDWOOD
 -ACOUSTIC UNDERLAYMENT
 -4" CONC. SLAB
 -SPRAY TEXTURED CEILING
- E - STANDARD FLAT ROOF 1 HOUR F.R.R.**
 -ROOF MEMBRANE
 -FIBERGLASS FACED GWB
 -10" RIGID INSULATION - SLOPED TO DRAINS
 -POLY VAPOUR BARRIER
 -4" CONCRETE SLAB
 -SPRAY TEXTURED CEILING
- F - SLOPING ROOF**
 -STANDING SEAM METAL ROOF
 -ICE AND WATER SHIELD
 -FIBERGLASS FACED GWB ROOF PANEL
 -10" RIGID INSULATION
 -POLY VAPOUR BARRIER
 -STEEL ROOF DECKING
 -OPEN WEBBED STEEL JOISTS
- G - ROOF TERRACE**
 -PORCELIN DECKING TILES
 -ADJUSTABLE PEDASTALS
 -10" RIGID INSULATION
 -12" FIBRE CEMENT PANEL
 -ROOF MEMBRANE
 -4" CONC. SLAB
 -SPRAY TEXTURED CEILING
- H - FLAT ROOF (TOP EXPOSURE)**
 -TORCH ON ROOFING MEMBRANE
 -FIBRE FACED GYPSUM
 -10" RIGID INSULATION
 -ROOF MEMBRANE
 -4" CONC. SLAB
 -3 5/8" STEEL STUDS
 -5/8" GYPSUM WALLBOARD
- I - FLAT ROOF (DOUBLE EXPOSURE)**
 -TORCH ON ROOFING MEMBRANE
 -10" RIGID INSULATION
 -ROOF MEMBRANE
 -4" CONC. SLAB
 -3" RIGID INSULATION
 -4" AIRSPACE
 -12" LINEAR METAL SUSPENDED SOFFIT
- J - TERRACE PLANTER**
 -2" ORGANIC MULCH
 -2 - 0" ENGINEERED SOIL
 -ARRIATION LAYER
 -FILTER FABRIC
 -ROOT BARRIER
 -10" RIGID INSULATION
 -12" FIBRE CEMENT PANEL
 -ROOF MEMBRANE
 -4" CONC. SLAB
 -SPRAY TEXTURED CEILING

WALL TYPE SCHEDULE

NOTE: ALL WALLS TO BE TYPE A U.N.O

- A** TYPE A: 3" PARTITION WALL
 -12" GWB
 -3 5/8" STEEL STUDS
 -12" GWB
- B** TYPE B: 6" HALLWAY WALL
 -5/8" TYPE-X GWB
 -3 5/8" STEEL STUDS
 -WIBATT INSULATION
 -5/8" TYPE-X GWB
 60 MINUTE F.R.R.
- C** TYPE C: 12" PARTY WALL
 -5/8" TYPE-X GWB
 -3 5/8" STAGGERED STEEL STUDS
 -WIBATT INSULATION
 -5/8" TYPE-X GWB
 60 MINUTE F.R.R.
- D** TYPE D: 8" EXTERIOR WALL
 -5/8" TYPE-X GWB
 -3 5/8" STEEL STUDS
 -WIBATT INSULATION
 -12" FIBERGLASS FACED GWB
 -AIR VAPOUR BARRIER
 -4" SEMI-RIGID INSULATION
 -W/ CLIP SYSTEM
 -12" AIR SPACE
 -FIBRE CEMENT PANELS
- E** TYPE E: 8" EXTERIOR WALL
 -5/8" TYPE-X GWB
 -3 5/8" STEEL STUDS
 -WIBATT INSULATION
 -12" FIBERGLASS FACED GWB
 -AIR VAPOUR BARRIER
 -4" SEMI-RIGID INSULATION
 -W/ CLIP SYSTEM
 -12" AIR SPACE
 -GREEN TILE
- F** TYPE F: 8" EXTERIOR WALL
 -5/8" TYPE-X GWB
 -3 5/8" STEEL STUDS
 -WIBATT INSULATION
 -12" FIBERGLASS FACED GWB
 -AIR VAPOUR BARRIER
 -4" SEMI-RIGID INSULATION
 -W/ CLIP SYSTEM
 -12" AIR SPACE
 -STAINLESS STEEL PANELS
- G** TYPE G: 8" EXTERIOR WALL
 -5/8" TYPE-X GWB
 -3 5/8" STEEL STUDS
 -WIBATT INSULATION
 -12" FIBERGLASS FACED GWB
 -AIR VAPOUR BARRIER
 -4" SEMI-RIGID INSULATION
 -W/ CLIP SYSTEM
 -12" AIR SPACE
 -4" BRICK
- H** TYPE H: 8" CONCRETE WALL
 -8" CONCRETE
- I** TYPE I: 8" CONCRETE MASONRY
 -8" CONCRETE MASONRY
- J** TYPE J: 12" CONCRETE WALL WITH EXTERIOR INSULATION
 -8" CONCRETE
 -4" RIGID INSULATION



HEATED PARAPET SECTION DETAIL
 3
 A13 3" = 1'-0"

RESIDENTIAL SUITE

UNHEATED PARKING BELOW
 1
 A13 3" = 1'-0"

UNHEATED PARKING BELOW

GREEN ROOF SECTION DETAIL
 2
 A13 3" = 1'-0"

No.	Revision	Date	By

PROJECT NAME
448 TRANQUILLE ROAD

DRAWING TITLE
DETAIL SECTIONS

SCALE
 As indicated

DRAWN BY
 T. STEWART

CHECKED
 D. PARKES

DATE
 04/07/22

JOB NO.
 3310 - 2022

A13